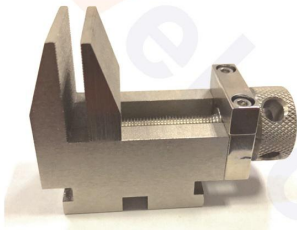
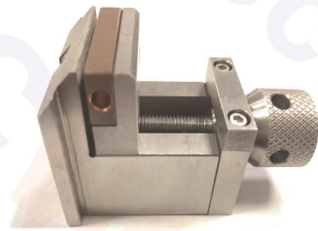
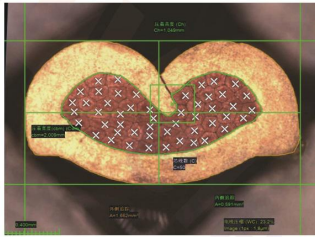


# JCW-QC30

Fully-auto Terminal Cross Section Analyzer



## Features

- No resin curing required, complete a small sample in 45 seconds
- Integrated video measuring microscope, individually cut or polish, or automatic cutting & polishing
- Visual cutting position, cutting position can be set optionally, positioning accuracy within 5 $\mu$ m
- Stainless steel material fixture (non-aluminum material), high temperature hardening treated
- Professional terminal analysis software, one-click export report, can be saved or printed

## Technical Data

<b>Analyzer</b>	Imported continuous variable power optical system, objective lens magnification 0.7—4.5X		
<b>Video total magnification</b>	65~419X	/	<b>Wire range</b> AWG4/0-AWG46 ( 0.008 - 120mm <sup>2</sup> )
<b>Clamp diameter</b>	Max 20 mm	/	<b>Accuracy</b> $\pm 2\mu$ m
<b>Cutting blade</b>	$\Phi 125 \times 0.5$ mm	/	<b>Cutting and grinding time</b> 5 - 45 seconds
<b>Polishing sandpaper</b>	125mm / 1500#	/	<b>Standard optical device</b> 0.1 / 10mm
<b>Imaging system</b>	Basler (Germany), 5 megapixel CCD camera	/	<b>HMI</b> 7" color touchscreen, English
<b>Hardware</b>	Cutting motor: SEW (Germany). Grinding and automatic lift motor: Shinano (Japan). X axis motor: Shinano (Japan). Misumi ball screw, Hiwin linear guideway		
<b>Lighting</b>	Tunable white lighting device	/	<b>Rated power</b> 750 W