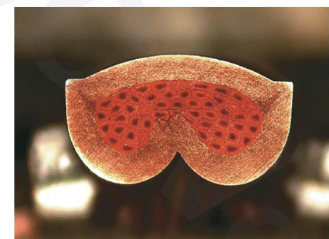
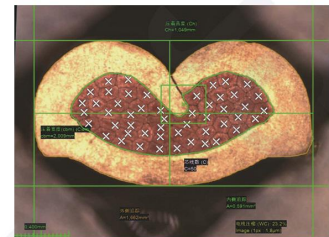


# JCW-QC20

## Semi-auto Terminal Cross Section Analyzer



### Features

- Quadruple cutting safety protection
- The fixture is made of 45# bearing steel (non-aluminum material), high temperature hardening treated, prevent clamping wear and tooth end loosening
- CNC fine milled grinding and polishing disc
- The cutting disc is adjustable in 3 directions of XYZ, dial indicator calibration squareness

### Technical Data

<b>Analyzer</b>	Imported continuous variable power optical system, objective lens magnification 0.7—4.5X			
<b>Video total magnification</b>	12 ~ 312X	/	<b>Wire range</b>	AWG000-AWG46 ( 0.008 - 75mm <sup>2</sup> )
<b>Clamp diameter</b>	Max 20 mm	/	<b>Accuracy</b>	±2μm
<b>Cutting blade</b>	Φ100 x 0.5mm	/	<b>Cutting and grinding time</b>	2 - 3 minutes
<b>Polishing sandpaper</b>	125mm / 1500#	/	<b>Standard optical device</b>	0.1 / 10mm
<b>Imaging system</b>	Balser,3 megapixel CCD camera	/	<b>Lighting</b>	Tunable white lighting device
<b>Rated power</b>	350 W	/	<b>Power supply</b>	AC 110V - 220V, 50 / 60 Hz